



Wellers Auctions

West Meon Collective Auction Spring 2024





Wellers
Auctions



+44 7966 437 095



rob@wellersauctions.com



www.wellersauctions.com



Office Address: Bedford Road,
Guildford, Surrey, GU1 4SJ

Dear Sir/Madam,

Welcome to the Spring West Meon Collective Auction! We are thrilled to have you join us for what promises to be an exhilarating day of auctioneering and bidding. As the vibrant spirit of spring surrounds us, we eagerly anticipate the bustling atmosphere of auction day, as buyers and sellers come together for this exciting event.

For those of you who are new to our auction, we extend a warm welcome and assure you that you're in for a treat. Today's offerings span a diverse array of items, from seasonal nursery stock to agricultural antiques, garden furniture to workshop equipment, tractors & vehicles and so much more. Whatever your interest or need, there's something here for everyone!

Furthermore, in addition to today's auction, we also have two upcoming sales taking place here on Saturday, 13th July and Saturday, 28th September. Mark your calendars and join us again for more opportunities to bid at auction.

If you have items you'd like to consign for our future auctions, we encourage you to reach out to us. You can contact either myself, Rob Snelgar, at rob@wellersauctions.com or call 07966 437 095, in addition to myself you can also contact Tom Lofts at 07771 556 000 for any entries to either of our next two auctions. Alternatively, you can conveniently submit your consignment online through our website at www.wellersauctions.com/farm-auctions/entry-forms/. You can scan the QR code found on the final page to get straight to our website.

As the bidding begins and excitement fills the air, we wish all our customers the best of luck. We hope you find exactly what you're looking for and enjoy a memorable experience with us. Thank you for joining us, and here's to a successful and enjoyable auction day!

Sincerely,

Rob Snelgar
Director



FEATURED LOTS

Please see some of the highlighted lots in this auction... For the rest of the auction catalogue, please continue onto the following page.

New Holland 658 Baler



Sheep Turnover Crate



Land Rover



Horse Box



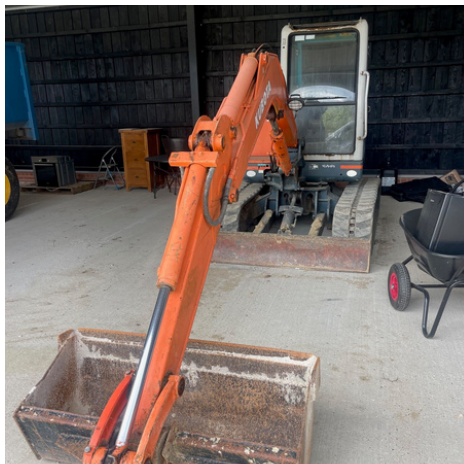
Ford 2000



Lely Optimo 205c Mower



Kubota



John Deere 2650



AUCTION CATALOGUE

20th April 2024

Auctions starts: 9.30am onwards *= 20% VAT on the Hammer
12.5% Buyer's Premium + VAT on the Hammer

Auction 1 – 9:30

Hedging, ornamental trees, bedding plants, fruit trees, and more.

1/20 *HEDGING PLANTS INC. LAURELS, PHOTINIA, PYRACANTHA AND YEWS
21/30 *BUXES BALLS/PYRAMIDS
31/38 *ORNAMENTAL TREES
39/53 *MIXED CONIFERS
54/58 *CEANOTHUS
59/68 *CLIMBING ROSE FRAMES
69/74 *MIXED TRELLIS FRAMES
75/79 *MIXED SHRUBS
80/85 *RHODODENDRONS
86/90 *LAVENDERS
91 *STANDARD PHOTINIA/LIGUSTRUM
92/101 *MIXED ROSES
102/106 *CORDYLINE
107/111 *EVERGREEN JASMINE
112/116 *CLIMBING PLANTS
117/121 *FATSIA
122/136 STANDARD FRUIT TREES
137/141 FRUIT BUSHES
142/145 BAY BUSHES
146/151 MIXED HERBS
152/163 BAY HALF STANDARD LOLLIPOP
164/178 SPARE LOT
179 X2 EUCALYPTUS TREES
180/195 X10 LAUREL HEDGING
196 /300 SPARE LOT

Auction 2 – 10:00

Timber and builders' sundries, new tools, chainsaws, Land Rover and auto spares, general miscellaneous.

301/302 X2 TINS OF PAINT
303/304 BAY OF METAL SHELVING
305 BAY OF PALLET RACKING

306 VAN ROOF CLAMPS
307 MULTI DRAWER CABINET
308 4 COMPARTMENT LOCKER
309 NEW CARPET TILES
310 WOOD FLOOR TILES
311 INDUSTRIAL ELECTRIC HEATER, LITTLE USED
312 INDUSTRIAL ELECTRIC HEATER, LITTLE USED
313 STIANLESS STEEL SINK UNITS, GOOD SIZE AND QUALITY
314 STIANLESS STEEL SINK UNITS, GOOD SIZE AND QUALITY
315 STIANLESS STEEL SINK UNITS, GOOD SIZE AND QUALITY
316 GALVANISED FENCING RAILS AND PANELS
317 GALVANISED FENCING RAILS AND PANELS
318 GALVANISED GATE POSTS
319 GALVANISED GATE POSTS
320/322 SPARE LOT
323/325 CHIMNEY POTS
326/327 QUANTITY 4 X 2 TIMBER
328/331 VARIOUS POSTS AND TIMBER
332/334 SPARE LOT
335/336 PALLET OF NEW STONE COPINGS
337/338 QAUNTITY CURVED ROOFING SHEETS
339 X16 SHEETS CHIPBOARD, 65MM X 90MM X 10MM
340/343 QUANTITY TIMBER
344 METAL ROOFING SHEETS
345 BARN CAPPING AND GUTTERING
346 QUANTITY OF GUTTERING AND PIPEWORK
347 PALLET OF ASSORTED BRICKS
348 PALLET OF PAVING BRICKS
349 QUANTITY OF ROOFING SHEETS
350/351 X10 BOX PROFILE ROOFING SHEETS
352 X20 13FT SCAFFOLD BOARDS, NEW, NEVER USED

AUCTION CATALOGUE

20th April 2024

Auctions starts: 9.30am onwards *= 20% VAT on the Hammer
12.5% Buyer's Premium + VAT on the Hammer

353	X20 10FT SCAFFOLD BOARDS, NEW, NEVER USED	394	*2 PRONG FENCING FORK
354	X20 8FT SCAFFOLD BOARDS, NEW, NEVER USED	395	*STAINLESS BORDER FORK AND SPADE
355	6FT TALL GREEN SECURITY FENCING	396	*STAINLESS DIGGING FORK AND SPADE
356	QUANTITY OF STEEL LINTELS	397	*BORDER FORK AND SPADE
357	X4 PACKS OF NEW BATTEN	398	*DIGGING FORK AND SPADE
358	DRAIN LIDS AND BASES	399	*POST HOLE DIGGER
359	4" DRAINPIPE AD SOAK AWAY CRATE	400	*ALUMINIUM SHOVEL
360	ALLY TOWER WITH WHEELS	401	*X2 MANURE FORKS
361/362	NEW 1.8M CATNICK	402	*PROFESSIONAL GROUNDWORK TOOL
363	X30 OAK VENEER DOORS WITH FURNITURE	403	*HEAVY DUTY ROOT CHOPPER
364	X6 OAK POSTS FOR EXTERNAL PORTCH	404	*6FT SPEAR AND JACKSON TREE LOPPER
365	X3 WOODEN CASEMENT WINDOWS, APPROX 8FT X 4FT	405	*WIRE STRAINER
366	CAST IRON DRAIN GRATES	406	*SPLITTING AND FETTLING AXE
367/369	X2 DOLAV BLUE PALLET BOXES	407	*SPEAR AND JACKSON SCRAPER
370/371	SPARE LOT	408	*SPEAR AND JACKSON BYPASS LOPPER
372	*X3 80 X 30 F CRAMP	409	*SPEAR AND JACKSON LOPPER
373	*X2 1000 PIECE BIT SETS	410	*FENCEPOST AUGER
374	*X15 ECLIPSE 12" HACKSAW BLADES	411	*STAINLESS STEEL PRUNER KIT
375	*12 PIECE TUNGSTEN ROUTER SET	412	*HEAVY DUTY HOE
376	*X2 PEAR AND JACKSON LASER SAWS	413	*TELECOPIC RATCHET LOPPERS
377	*SAWS	414	*POWER PRUNER, LOPPER, AND SHEARS
378	*8 PIECE DEMING DRILL SET	415	*X2 PAIRS OF FENCING PLIERS
379	*25 PIECE DRILL SET	416	*X40 4.5" SLITTING DISCS
380	*29 PIECE DRILL SET	417	*X10 9" METAL CUTTING DISCS
381	*1000 PIECE CRIMP KIT	418	*X12 ASSORTED 4.5" FLAP DISCS
382	*X2 THROWING KNIVES	419	*X4 CLAW HAMMERS
383	*20" KUKRI MACHETTE	420	*12 PIECE PUNCH AND CHISEL SET
384	*CROSSBOW AND BOLTS	421	*WATERPUMP PLIER, AND X2 MINI PLIERS
385	*FLEECE LINED GUN BAG	422	*2M ALUMINIUM LEVEL
386	*24" BOLO MACHETE	423	*X3 ALUMINIUM SPIRIT LEVELS
387	*CARTRIDGE BAG	424	*30" BOLT CROPPERS
388	*KNIFE AND SHEATH	425	*24" BOLT CROPPERS
389	*KNIFE AND SHEATH	426	*34 PIECE DRIVE STAR AND BIT SET
390	*METAL BB AIRSOFT GUN	427	*9 PIECE KNIFE SET IN BAG
391	*X4 BRITISH ARMY FOLDING KNIVES	428	*9 PIECE KNIFE SET IN BAG
392	*X4 BRITISH FOLDING POCKET KNIVES		
393	*X2 HEAVY DUTY STEEL RAKES		

AUCTION CATALOGUE

20th April 2024

Auctions starts: 9.30am onwards *= 20% VAT on the Hammer
12.5% Buyer's Premium + VAT on the Hammer

429	*3 PIECE AIR GUN SET	470	*10 PIECE MM STUBBY SPANNER SET
430	*X10 AIR COUPLING FITTINGS	471	*25 CV METRIC SPANNER
431	*SANDBLASTER GUN	472	*X2 5 TONNE TOWING WEB STRAP
432	*11 PIECE 3/8" AF IMPACT SOCKETS	473	*8M LORRY STRAP
433	*10 PIECE AIR IMPACT SOCKET SET	474	*8M LORRY STRAP
434	*AIR RATCHET	475	*12M LORRY STRAP
435	*AIR SPRAY GUN	476	*12M LORRY STRAP
436	*X200 4.5MM LINCH PINS	477	*X4 4M X 1" LORRY STRAPS
437	*X6 DEPRESSED LASHING LINKS	478	*X4 800LB RATCHET STRAPS
438	*20 VARIOUS SHACKLES	479	*X4 800LB RATCHET STRAPS
439	*X8 ASSORTED HITCH PINS	480	*X10 POTS OF GORILLA GLUE
440	*X250 MIXED R CLIPS	481	*X24 SPID WIRE BRUSHES
441	*X100 8MM LINCH PINS	482	*THINNERS
442	*5FT BAR AND 24" STRONGBACK BAR	483	*2M EXTENDABLE WASH BRUSH
443	*JOCKEY WHEEL	484	*DRAIN AND CHIMNEY CLEANING ROD SET
444	*48MM RIBBED JOCKEY WHEEL	485	*5M X 4M HEAVY DUTY TARPAULIN
445	*SACK BARROW	486	*18FT X 23FT TARPAULIN
446	*TRAILER WINCH	487	*10 WATT 240V FLOODLIGHT
447	*WINCH 1/2 TONNE NYLON	488	*12V LEAD LAMP (5M CABLE)
448	*5/16" TOW CHAIN	489	*4FT TRAILER BOARD
449	*X3 STAINLESS PROFESSIONAL TAPES	490/492	CHAINSAW
450	*50M AUTO RECOIL SURVEY TAPE	493	PARTNER PETROL DISC CUTTER
451	*10FT TYZACK STRAIGHT EDGE	494/498	CHAINSAW
452	*X2 36" TYRE LEVERS	499	STIHL CHAINSAW, 19" CUT SAW BLADE, G.W.O
453	*3/8" EXTENDING SOCKET RATCHET	500	STIHL CHAINSAW, 18" CUT SAW BLADE, G.W.O
454	*JIGGLE SYPHON WITH 2M PIPE	501	STIHL FLOOR SAW
455	*3/8" TORQUE RENCH	502	*HUSQVARNA CHAINSAW, G.W.O
456	*1/2" X 24" VANADIUM FLEXBAR	503	STIHL 051HV CHAINSAW
457	*3/4" X 39" VANADIUM FLEX BAR	504	STIHL MS171 CHAINSAW
458	*ROTARY BARREL PUMP	505	CHAINSAW
459	*X12 GRIPPER GLOVES	506	PARKSIDE CORDELSS SAW WITH CHARGER
460	*X12 GRIPPER GLOVES	507	BOX OF CHAINSAWS FOR SPARES
461	*X24 GRIPPER GLOVES	508	KOMATSU 16" CHAINSAW, WORKING
462	*X24 GRIPPER GLOVES	509	EFCO 20" CHAINSAW, WORKING
463	*X12 NITRILE GLOVES	510	SEALEY CHAIN SHARPNER, BRAND NEW
464	*X12 NITRILE GLOVES	511	X2 STIHL DISC CUTTERS
465	*X4 70MM DISCUS PADLOCKS		
466	*X10 50MM IRON PADLOCKS		
467	*X3 STAINLESS 90MM DISC PADLOCKS		
468	*900MM HEAVY DUTY CHAIN AND LOCK		
469	*X2 16 PIECE SPANNER SETS		

AUCTION CATALOGUE

20th April 2024

Auctions starts: 9.30am onwards *= 20% VAT on the Hammer
12.5% Buyer's Premium + VAT on the Hammer

- | | | | |
|---------|---|-----|--|
| 512 | STIHL MS18 CHAINSAW WITH BAR AND COVER, G.W.O | 551 | X2 ROUND MANHOLE COVERS PLUS EXTENSIONS |
| 513 | TANAKA HT 2530 30" CHAINSAW, G.W.O | 552 | PLASTIC BRIC WALL CAVITY PLASTIC VENTS |
| 514 | STIHL TS400 DISC CUTTER, NO FAULTS, FOR REFURBISHMENT | 553 | LARGE PLASTIC WATER TUBS |
| 515 | STIHL PETROL DISC CUTTERS, SPARES AND REPAIR | 554 | BUILDERS TOOLS, SLEDGE HAMMERS, PICKAXE, SHOVELS, ETC |
| 516 | WOLF GARDEN LINE PETROL CHAIN SAW, G.W.O | 555 | SUMBMERSIABLE 3" ELECTRIC WATER PUMP WITH 50M PIPING, IN WORKING ORDER |
| 517 | MCCULLOCH MC438 PETROL CHAINSAW, G.W.O | 556 | X4 6' ACROW PROPS |
| 518 | MAKITA 18V PETROL CHAINSAW, WILL START | 557 | 4 WHEEL BOARD CARRIER WITH FRAME |
| 519/528 | SPARE LOT | 558 | FLOOR BOARD WRENCH AND WELD MESH |
| 529 | HAND PUMP ON STAND | 559 | X2 THERMALITE BLOCK SAWS |
| 530 | 150KG SWING HOIST | 560 | STEEL SCAFFOLD LADDER |
| 531 | COMPRESSOR | 561 | VARIOUS CONCRETE LINTELS |
| 532 | PETROL JET WASH | 562 | VARIOUS STEEL LINTELS |
| 533 | PARTS WASHER TANK | 563 | PLASTERERS BEADING |
| 534 | GENERATOR | 564 | GAS HEATER |
| 535 | GENERATOR | 565 | BLACK GUTTERING DOWNPIPES, VARIOUS LENGTHS |
| 536 | DOOR FRAME WITH SILL, 2.9FT X 6.6FT, NEW CONDITION | 566 | 4" ROLL UNDERGROUND BLACK TRUNKING |
| 537 | GARAGE DOOR FRAME, 8FT X 7.6FT, NEW CONDITION | 567 | 6" ROLL UNDERGROUND BLACK TRUNKING, UNUSED |
| 538 | HARDWOOD WINDOW FRAME, 1200 X 1200 WITH FROSTED GLASS, AS NEW | 568 | X3 WHEELBARROW WHEELS WITH SOLID TYRES AND AXLES |
| 539 | HARDWOOD WINDOW FRAME, 1200 X 1200 WITH CLEAR GLASS, AS NEW | 569 | X2 ROADWORK SIGNS |
| 540 | X4 PLASTIC SAFETY BARRIERS | 570 | X4 SHEETS REINFORCING MESH, VARIOUS SIZES |
| 541 | X9 HERRAS FENCING BARRIERS | 571 | VARIOUS SCAFFOLDING CLIPS |
| 542 | HERRAS FENCE CLIPS | 572 | X4 GAS/ELECTRIC 240 WALL MOUNTED BOXES |
| 543/544 | X10 20L PLASTIC CANS | 573 | 110V LIGHT FITTING WITH LEADS |
| 545 | X2 TUBS VARIOUS JOIST HANGERS | 574 | 110V LEADS WITH 2 WAY SPLITTERS |
| 546 | X2 TUBS HEAVY DUTY JOIST HANGERS | 575 | 110V LEADS WITH 4 WAY SPLITTERS |
| 547 | X11 12" ROLLS DPC, UNUSED | 576 | 6" FOAM SKIRTING ROLLS |
| 548 | VARIOUS DPC ROLLS | 577 | VARIOUS RADIATOR FITTINGS |
| 549 | VARIOUS DRAIN FITTINGS AND VARIOUS LENGTHS 4" DRAIN PIPES | 578 | X4 FLUORECENT TUBES |
| 550 | X2 SQUARE MAN OLE COVERS PLUS EXTENSIONS | 579 | OLD SACK TRUCK |

AUCTION CATALOGUE

20th April 2024

Auctions starts: 9.30am onwards *= 20% VAT on the Hammer
12.5% Buyer's Premium + VAT on the Hammer

580	OLD GARDEN TOOLS	611	SCAFFOLD TOWER
581	HEAVY DUTY HOSE PIPE	612	PAIR OF BROTHERS LONG LIFTING CHAINS
582	PETROL GENERATOR	613	*SELECTION OF STEEL TOW CABLES
583	TWIN DIESEL COMPRESSOR WITH AIR PIPE AND BREAKER, NO BATTERY	614	*X6 BOWDEN CABLES WITH LEVERS
584	FIRST FLOOR JOISTS UNDER FLOOR HEATING BRACKETS	615	*100 TONNE BROTHERS LIFTING CHAINS
585	PAIR OF WOODEN GATES	616	X6 ACROW PROPS
586	X10 HERAS FENCING	617	QUANTITY OF NEW AND USED ROAD CONES
587	X6 STEEL TIMBER TREES	618	X8 INDUSTRIAL 240V FANS AND COVERS, G.W.O
588	X2 SETS OF STEEL CRATES	619	LARGE ALKO ELECTRIC CEMENT MIXER WITH STAND, G.W.O
589	X3 HAND ROLLERS	620	X14 WELD MESH PANELS, 2M X 2M (6FT X 6FT) 50MM (2") SQUARES
590	SELECTION OF LADDERS	621/638	SPARE LOT
591	SELECTION OF STEELS	639/642	X4 LIFTING STRAPS
592/593	SELECTION OF TIMBER	643	SDMO 2500 PETROL GENERATOR, FOR REFURBISHMENT
594	BLUE ELECTRIC SCROLL SAW, G.W.O	644	NIELSEN PETROL GENERATOR, FOR REFURBISHMENT
595	HOMELITE PETROL PRESSURE WASHER, SPARES AND REPAIRS	645	DIESEL ENGINE COMPRESSOR WITH ELECTRIC START, GOOD USED CONDITION
596	RED ELECTRIC PRESSURE WASHER, SPARES AND REPAIRS	646	BELLE MINI MIXER WITH FOLDING STAND, G.W.O
597	WILKS USA TX650 PRESSURE WASHER, SPARES AND REPAIRS	647	PARAMAC 4000 GENERATOR, NON RUNNER
598	KARCHER ECO HD 5745 MDS STEAM CLEANER, G.W.O	648	*ELECTRIC SUMP PUMP, G.W.O
599	MAKITA 18V IMPACT DRIVERS AND SAWS, SOME WORK, SOME DO NOT	649	*QUANTITY OF 20MM BLUE AND BLACK PLASTIC WATER PIPE, VARIOUS LENGTHS
600	110V SKILL SAW, G.W.O	650	15 CWT TIRFOR WINCH AND CABLE, SPARES AND REPAIRS
601	COLLECTION OF TOOLS AND SPANNERS	651	240V TRIPOD STAND PORTABLE LIGHT, G.W.O
602	PLASMA CUTTER, G.W.O	652	3 PHASE 1.5HP ELECTRIC MOTOR, FOR REFURBISHMENT
603	MECHANIC LIFTER SMALL PALLET TRUCK, G.W.O	653	240V ELECTRIC WATER PUMP, FOR REFURBISHMENT
604	FULL SHEETS AND SOME PART SHEETS, USED IN GOOD CONDITIO	654	SET OF DRAIN RODS
605	PETROL GENERATOR, G.W.O		
606	X2 METAL CAR RAMPS		
607	4 POSTER BEAM JACK, G.W.O		
608	PETROL GENERATOR, HONDA ENGINE, WORKING ORDER		
609	TOOL BOX, VERY STRONG, 36" X 20" X 19"		
610	*GAS BOTTLE CAGE		

AUCTION CATALOGUE

20th April 2024

Auctions starts: 9.30am onwards *= 20% VAT on the Hammer
12.5% Buyer's Premium + VAT on the Hammer

655	QUANTITY OF FREEFOAM AND PERMACELL FASCIA BOARDS	680	PARTIAL COIL 20PR OVERHEAD TELEPHONE CABLE WITH SUPPORT CABLE
656	QUANTITY OF STAINLESS STEEL CATERINGWARE	681	AJAX POWER HACKSAW
657	SAW HORSE, G.W.O	682	BOX OF VINTAGE ELECTRIC DRILLS
658	JIGSAW, FOR REFURBISHMENT	683	ARC WELDER
659	MAKITA BATTERY TOOLS	684	X5 200L EMPTY BLUE PLASTIC DRUMS, USED, CONTAINED ADBLUE
660	MAKITA BATTERY TOOLS	685	QUANTITY OF HAND TOOLS
661	SPRAYER	686	QUANTITY OF HAND TOOLS
662	OLD CEMENT MIXER ON SINGLE AXLE, ENGINE MISSING, SPARES AND REPAIR	687	QUANTITY OF HAND TOOLS
663	HEAVY DUTY WORKSHOP GAS BOTTLE TROLLEY	688	QUANTITY OF 110V DISTRIBUTION BOXES
664	SMALL 240V TABLE SAW	689	110V TRANSFORMER AND BOX
665	X2 110V SPOTLIGHTS WITH TRIPODS, RAGGIO 1	690	240V CEMENT MIXER
666	X2 110V SPOTLIGHTS WITH TRIPODS, RAGGIO 1	691	QUANTITY OF STEEL WIRE
667	X2 110V SPOTLIGHTS	692	QUANTITY OF ALUMINIUM LADDERS
668	X4 240V HALOGEN SPOTLIGHTS WITH TRIPODS	693	X2 ROLLS OF HEAVY MESH FENCING
669	QUANTITY OF MAINS ELECTRICAL FITTINGS INC. PLUGS AND SOCKETS	694	QUANTITY OF RE-BAR TYRING WIRE
670	QUANTITY OF MAINS LIGHT FITTINGS	695	QUANTITY OF POWER TOOLS
671	QUANTITY OF PLUMBING FITTINGS, INC. BASIN, TAPS, GUTTER FIXINGS	696	LARGE QUANTITY OF WATER PIPE FITTINGS
672	QUANTITY OF DECORATORS BRUSHES, TRAYS, ROLLERS ETC	697	X2 CLAY PIGEON TRAPS
673	BOX OF MISC HAND TOOLS INC. VICE AND CLAMPS	698	QUANTITY OF 110V LEADS/SPLITTERS
674	BOX OF GARDENING TOOLS INC. SHOVELS, AXE, EDGING SHEARS ETC	699	MAKITA 110V CHOP SAW
675	X13 TINS OF PAINT, UNOPENED	700	NYLON ROPE
676	BOX OF BENCH GRINDING WHEELS AND BRUSHES	701	ELECTRIC SAW BENCH, WORKING
677	COIL OF 220M 16MM BLUE POLYPROP ROPE	702	X4 ROLLS NEW BARBED WIRE
678	PART COIL 16MM BLUE POLYPROP ROPE	703	5FT X 3' SCAFFOLD TOWER ON WHEELS
679	PARTIAL DRUM OF 6MM BLUE POLYPROP ROPE	704	X6 SHORT TRESSLES
		705	ELECTRIC CONCRETE MIXER
		706	L.Q CAR MANUALS AND MAGAZINES
		707	WROUGHT IRON FITTINGS
		708	SCAFFOLD FITTINGS AND SCAFFOLD GATE
		709	ASSORTED PIPEWORK
		710/729	SPARE LOT
		730/779	TOOLS
		780/796	SPARE LOT
		797	SET OF DISCOVERY SIDE STEPS
		798	TRANSIT LEAF SPRINGS
		799	X2 SETS OF ROOF BARS

AUCTION CATALOGUE

20th April 2024

Auctions starts: 9.30am onwards *= 20% VAT on the Hammer
12.5% Buyer's Premium + VAT on the Hammer

800	LANDROVER BACK DOOR TYRE MOUNT	822	X4 NISSAN XTRAIL ALLOY WHEELS AND TYRES, G.W.O
801	LANDROVER ALUMINIUM REAR HALF DOOR	823	FORD RANGER WHEELS AND TYRES
802	LANDROVER ROOF LIGHTS AND MOUNT	824	BRADLEY TOW HITCH
803	DISCOVERY 3 FRONT AND REAR SPARES	825	MORRIS 1000 CAR LIGHTS
804	RANGE ROVER SPORT BONNET, BUMPER WINGS, IN BLCK	826	X4 STEEL WHEELS FROM 2008 VW TRANSPORTER, WITH LEGAL TYRES
805	X6 ROLLS ROYS STAINLESS STEEL HUB CAPS	827	ROLL N LOCK BED SHUTTER FOR HILUX MK7, G.W.O
806	HARLEY DAVIDSON ENGINE, LIGHTS AND OTHER PARTS OFF OF A VINTAGE HARLEY DAVISON	828	CHROME ROLL BAR FOR HILUX MK7, G.W.O
807	X5 LANDROVER DISCOVERY 2 WHEELS, FITTED WITH BF GOODRICH ALL TERRAIN TYRES, WITH SPARE BEING BRAND NEW	829	ROLL N LOCK BED SHUTTER FOR VW AMAROK, G.W.O
808	LANDROVER DISCOVERY R380 GEARBOX	830	DOG GUARD AND BOOT ROLLER FOR LANDROVER DISCOVERY 4, G.W.O
809	DISCOVERY 1 REAR DOORS	831	X4 MINI 5 SPOKE 15" ALLOYS WITH USED 175/65 R15 TYRES
810	BF GOODRICH AT TYRES 235/70 R16, SLIGHTLY PERRISHED, HELD AIR WELL WHEN REMOVED	832	X4 FORD RANGER WHEELS AND TYRES
811	GALVANISED ROOF RACK FOR LANDROVER DEFENDER 90 WITH REAR LOADER, G.W.O	833/835	WHEELS AND TYRES
812	REAR SPORTS BAR FOR PICK UP TRUCK, FROM L200, MAY FIT OTHERS	836/837	CLAY TRAP
813	X4 TDS 17" TYRES	838	ALUMINIUM GARDEN TABLE AND 4 CHAIRS
814	X4 17" ALLOYS	839	X3 GARDEN FORKS
815	TRUCK WHEEL RIMS AND RECOVERY LIGJHTS	840	WALL SAFE (WITH KEY)
816	TRUCK ENGINE	841	BOX SAFE (WITH KEY)
817	PAIR OF ISUZU 17" WHEEL RIMS AND TYRES, GOOD CONDITION	842	STEEL TOOLBOX
818	FULL SIZE TRANSIT ROOF RACK	843	POST HOLE BORER
819	X2 MAXXIS MU511 225/80 12 TYRES	844	GUILLOTINE ON STAND
820	*255/65/R17 TYRES, NEARLY NEW	845	QUANTITY OF FIRE EXTINGUISHERS
821	X10 COMMERCIAL AND 4X4 WHEELS AND TYRES, G.W.O	846	ACETEYLENE GAS BOTTLES AND ATTACHMENTS
		847	GUN CABINET (3/4 GUN SIZE), AS NEW
		848	SACK BARROW, STAIRS CLIMBING TYPE
		849	JOCKEY WHEEL
		850	WINE RACK
		851	X2 WOODEN SIDE GATES
		852	X2 FENCE SPRAYER
		853	TONNE BAG FULL OF PLASTIC PLANT POTS AND TRAYS
		854	TONNE BAG FULL OF SEED TRAYS

AUCTION CATALOGUE

20th April 2024

Auctions starts: 9.30am onwards *= 20% VAT on the Hammer
12.5% Buyer's Premium + VAT on the Hammer

855/860 GARDENERS SUNDRIES	902 VICTOR INDUSTRIAL FLOOR CLEANER
861 ELECTRIC STRIMMER, CHAINSAW, AND HEDGE CUTTER	903 RANGEMASTER 110 LPG COOKER
862 6' PLASTIC STORAGE SHED	904 2 PERSON HOT TUB
863 WORKSHOP STORAGE CAINET	905 POWER TOOLS
864 ROLL OF YELLOW PIPE	906 ADHESIVES AND THINNERS
865/866 GARDEN TOOLS	907 CAS CANISTER
867/871 ASSORTED TOOLS AND WORKSHOP SUNDRIES	908 GARDEN TOOLS
872 SHELF UNIT FULL OF HARDWARE	909 RALEIGH CHILTERN LADIES BIKE
873 ASSORTED WIRE AND HOSE	910 POND WATERFALL AND PLANTS
874 PRESSURE WASHER	911 WOODEN GATE AND TIMBER
875 LARGE OLD TIN OF CREOSOTE	912 RABBIT RUN
876 TOOLBOX FULL OF SOCKETS AND SPANNERS	913 X3 BRAND NEW STORAGE CABINETS
877 LAWN EDGING AND LIGHTS	914 X3 BRAND NEW STORAGE CABINETS
878 WESTLAND CHICKEN MANUE PELLETS AND GROWMORE FERTILISER	915 PORTABLE GARAGE, 6.2M (L) X 3.2M (W), 1FT TEAR IN ROOF
879 CAMPING CHAIRS, TABLE, AND WIND STOP	916 CAMPING STOVE AND BBQ
880 WHEEL BARROW	917 PLASTIC RABBIT HUTCH
881 CHILDRENS RIDE ON TRACTOR (WITHOUT CHARGER)	918 HAND TRAILER WINCH
882 TWO LEAF GARDEN SPIRE	919 BLACK AND DECKER SKILL SAW
883 CAST IRON ORNAMENTAL FLOWER	920 SANDER
884 ENCLOSED DOG CARRYING CRATE FOR ESTATE VEHICLE	921 BOX OF OLD TOOLS
885 LARGE QUANTITY OF TOOLS	922 GARDEN SPRAYER
886 BOX OF ELECTRICAL ITEMS	923 BOX OF STAPLE GUN NAILS
887 BOX OF CAR RADIOS	924 BUDWEISER BEER FRIDGE
888 ANIMAL STUMP CHAINS	925 8' CONCRETE CORNER POST AND THRASHER
889 X2 GATE HINGES	926 HOT TUB
890 OUTBACK BBQ	927 RAYBURN, COMPLETE WITH PAPERWORK, USED CONDITION
891 GARDEN BIN, TOOLS, ETC	928 CHILDS FORD STYLED PDAL TRACTOR 'SMOBY'
892 GROUND SQUARES	929 CHILDS WOODEN CLIMBING FRAME WITH ROOF AND SLIDE
893 RALEIGH GENTS TOURING BIKE	930 THE REMAINS OF X2 OLD FLYMOS
894 SEA AND CARP FISHING RODS AND REELS	931 *DOUBLE STAINLESS SINK AND TAPS
895/896 ASSORTED MISC	932 *SWIMMING POOL SLIDE
897 X2 METAL SHELVING UNITS	933 LADIES BICYCLE, G.W.O
898 TRAY OF SCAFFOLD CLIPS	934 MONOBLOCK MIXER TAP, G.W.O
899/901 X4 BAGS KINDLING WOOD	935 DOG CAGE
	936 LARGE GAS BBQ AND ROTISSERIE, FULLY WORKING

AUCTION CATALOGUE

20th April 2024

Auctions starts: 9.30am onwards *= 20% VAT on the Hammer
12.5% Buyer's Premium + VAT on the Hammer

- 937 SPEAKERS FOR A PA SYSTEM, FULLY WORKING
- 938 UNIVERSAL ROOF BARS
- 939 HOLLYWOOD CAR BIKE RACK FOR REAR OF CAR, G.W.O
- 940 SWINE STING RAY CHOPPER SYTLE BIKE, G.W.O
- 941 LOGIK 60CM STAINLESS COOKER HOOD, G.W.O
- 942 CHROME UNICYCLE, G.W.O
- 943 GENTS NEW LE CHAMEAUX WELLINGTON BOOTS, SIZE 12.5, WITH BOX
- 944 VAX STEAM CLEANER, G.W.O
- 945 PINE COMPUTER CABINET
- 946 X5 BROWN OFFICE CHAIRS
- 947 WINE RACK
- 948 3 PIECE WOODEN 8 SEATER BOARD ROOM TABLE
- 949 VELCO BIKEFAST MOBILITY SCOOTER, G.W.O
- 950 LARGE GREEN FIBREGLASS POND
- 951 3 WHEEL TRIKE, G.W.O
- 952 4 FRAME HONEY SPINNER, G.W.O
- 953 PUMP TRUCK, G.W.O
- 954 MOUNTAIN BIKE, 26" WHEELS, W.O
- 955 ELECTRIC FLYMO, W.O
- 956 YURT TENT
- 957 YURT TENT
- 958 APOLLO MOUNTAIN BIKE
- 959 TRAY OF DECORATORS SUNDRIES
- 960 ELECTRIC WATER HEATER
- 961 BABYBELL ELECTRIC COOKER
- 962 X4 FIRE EXTINGUISHERS
- 963 / 1049 SPARE LOT

Auction 3 - 11:00

First draft of a major farm clearance from a local estate, 100 lots of general farm equipment, livestock sundries, compressors, pressure

washers, a Massey Ferguson 185, and a Toyota Land Cruiser.

1050/1150 *FARM CLEARANCE

To be followed by farm implements and machinery, trailers, tractors, vehicles, machinery spares, livestock sundries and general farm equipment.

- 1151 MF SMALL BALE BALER AND SLEDGE
- 1152 NEW HOLLAND ROUND BALER
- 1153 ALLMAN GRASSLAND BOOM SPRAYER
- 1154 MF FLATBED MUCK SPREADER
- 1155 *PROFORGE BAG LIFTER
- 1156 *SUTON MAN CAGE
- 1157 GWAZA POST HOLE AUGER, P.T.O DRIVE, 6"-12" AUGERS
- 1158 BALE LIFTER / FORK LIFT
- 1159 *KUHN TWIN DISC FERTILISER SPREADER, G.W.O
- 1160 *QUICKE 2M BUCKET GRAB, G.W.O
- 1161 *QUICKE 2M BUCKET
- 1162 *CONCRETE MICER BUCKET, G.W.OI
- 1163 *TEAGLE STRAW CHOPPER, 3PT MOUNTED, G.W.O
- 1164 *TRACTOR ROAD BRUSH
- 1165 *NEW HOLLAND ROUND BALER WITH CHOPPER, 33350 BALES, G.W.O
- 1166 *9FT TRACTOR RING ROLLER
- 1167 *TRACTOR FLAT ROLLER, CONCRETE FILLED
- 1168 9 TINE CULTIVATOR
- 1169 MF DISC HARROWS
- 1170 ROAD BRUSH
- 1171 PARMITER CHAIN HARROW, G.W.O
- 1172 RIPSAW P.T.O V.BELT SAW BENCH, WORKING
- 1173 FERGUSON FORKLIFT 3 POINT LINKAGE

AUCTION CATALOGUE

20th April 2024

Auctions starts: 9.30am onwards *= 20% VAT on the Hammer
12.5% Buyer's Premium + VAT on the Hammer

- 1174 SPRINGTINE HARROWS
- 1175 HOWARD MUCK SPREADER
- 1176 WATER BOWSER WITH PUMP
- 1177 ROAD BRUSH
- 1178 LOGIC MFG QUAD BIKE FLAIL TOPPER, V-TWIN 12.5HP ENGINE, LITTLE USE, G.W.O
- 1179 LOGIC QUAD BIKE FLAT ROLLER, GOOD HEAVY ROLLER, G.W.O
- 1180 MOUNTED QUAD BIKE SPRAYER, SPARES AND REPAIR
- 1181 *LOGIC SPRAY UNIT FOR QUAD BIKE, G.W.O
- 1182 FERGUSON NARROW CULIVATOR
- 1183 FERGUSON CULTIVATOR
- 1184 WESSEX COMPACT SOIL LEVELLER
- 1185 PARMITER FOLDING CHAIN HARROWS
- 1186 4FT CAMBRIDGE ROLL
- 1187 SMALL TRACTOR BUCK RAKE
- 1188 5FT 3-IN-1 BUCKET
- 1189 SUPERFLOW CHISEL PLOUGH
- 1190 *1990 KUHN POWER HARROWS WITH PRESS, FOR REFURBISHMENT
- 1191 *1995 LELY OPTIMO 205C MOWER, SPARES AND REPAIR
- 1192 *2000 SITREX SR420/11 HAY TURNER, G.W.O
- 1193 *VICON SPREADER, FOR REFURBISHMENT
- 1194 CULTIVATOR, G.W.O
- 1195 SMALL CHAIN HARROWS FOR QUAD/COMPACT TRACTOR
- 1196 HIAB/CRANE
- 1197 FERGUSON SINGLE FURROW PLOUGH
- 1198 FOLD DOWN SPIKE HARROW
- 1199 WESSEX 1.2M ROTARY TOPPER, 3 POINT LINKAGE, G.W.O
- 1200 *ALLMAN CROP SPRAYER WITH BRIGGS AND STRATTON ENGINE, WILL START
- 1201 *TOE TIP LOADER BUCKET
- 1202 *SPALDINGS AIR SEEDER, 8 OUTLET, 2 CONTROL BOXES
- 1203 *FLAT 8 BALE GRAB, JCB BRACKETS, NEEDS A COUPLE OF NEW TINES
- 1204 *BROWNS FLAT 8 BALE GRAB, EURO BRACKS, NEEDS ATTENTION
- 1205 *PARMITER SILAGE FEEDER, 3 POINT LINKAGE
- 1206 *KRONE 2.1M ROTOVATOR, NO P.T.O GUARD
- 1207 VINTAGE MASSEY FERGUSON LOADING ARMS AND MUCK FORK
- 1208 10FT FLAT ROLLER, G.W.O
- 1209 HARROWS
- 1210 *KUHN GLB 1400 FERTILISER SPREADER, G.W.O
- 1211 *PZ HAYBOB 300
- 1212 *DOWDESWELL 4 FURROW REVERSIBLE PLOUGH
- 1213 *MOUNTED FEED PASSAGE SCRAPER
- 1214 KUHN MDF921 FERTILISER SPREADER, G.W.O
- 1215 HOWARD 150 DUNG SPREADER
- 1216 HOWARD 150 DUNG SPREADER
- 1217 4FT FLAT ROLLER
- 1218 X4 TRACTOR WEIGHTS
- 1219 DANUSER POST HOLE AUGER
- 1220/1231 SPARE LOT
- 1232 GALVANISED TRAILER
- 1233 2 WHEELED BOX TRAILER, G.W.O
- 1234 2 WHEELED TRAILER FOR LAWN TRACTOR, G.W.O
- 1235 SINGLE AXLE WOODEN TIPPING TRAILER, G.W.O
- 1236 IFOR WILLIAMS PLANT TRAILER, G.W.O
- 1237 6FT X 4FT IFOR WILLIAMS TRAILER WITH CAGE AND RAMPS, NEEDS 2 NEW TYRES, LIGHTS WORK EXCEPT FOR THE LEFT INDICATOR. NO PAPERWORK. HAS BEEN STANDING FOR A COUPLE OF YEARS.
- 1238 TRAILER, HOME BUILT FOR MOVING A SMALL CAR, G.W.O

AUCTION CATALOGUE

20th April 2024

Auctions starts: 9.30am onwards *= 20% VAT on the Hammer
12.5% Buyer's Premium + VAT on the Hammer

- 1239 8FT X 5FT UNBRAKED TRAILER, RAMP BACK, G.W.O
- 1240 IFOR WILLIAMS GD84 SINGLE AXLE RAMP TRAILER, FOR REFURBISHMENT
- 1241 2.8M X 1.6M FLAT BED TRAILER ON 8" WHEELS, G.W.O
- 1242 IFOR WILLIAMS TRAILER
- 1243 TWIN AXLE TRAILER, W.O
- 1244 2.5M X 1.6M TWIN AXLE TRAILER
- 1245 6FT X 4FT TRAILER
- 1246 8FT X 4FT 4 WHEEL HIGH SIDED TRAILER, 4 WHEEL BREAKING
- 1247 METAL 4 WHEEL TRAILER WITH RAMPS
- 1248 5FT X 4FT GALVANISED 2 WHEEL CAR TRAILER
- 1249 IFOR WILLIAMS TRAILER
- 1250 KUBOTA (D.W TOMLIN) 1 TONNE TIPPING TRAILER, GOOD TYRES
- 1251 *IFOR WILLIAMS 505 HORSE TRAILER, G.W.O
- 1252 *AMERICAN IMPORT HORSE TRAILER, G.W.O
- 1253 *3 TONNE TIPPING TRAILER
- 1254 *ALUMINIUM TIPPER BODY
- 1255 15 TONNE TANDEM AXLE TIPPING TRAILER, NEW HYDRAULIC HOSE AND RAM, RESEALED, WORKING ORDER
- 1256 WEST 10 TONNE GRAIN TRAILER, G.W.O
- 1257 *RICHARD WESTER 8 TONNE TIPPING TRAILER
- 1258 *10FT IFOR WILLIAMS PLANT TRAILER
- 1259 *30FT ARTIC BALE TRAILER WITH DOLLY
- 1260 *HERBST 20FT LOW LOADING TRAILER, SMALL AIR LEAK
- 1261 *BRENDERUP 3500KG PLAN TRAILER, LIGHT NEEDS REPAIR
- 1262 *3 TONNE TIPPING TRAILER
- 1263 12T HYDRAULIC TIPPING MUCK TRAILER
- 1264 *FARM VISIT/BEATERS WAGON, SEATS UPTO 20, G.W.O
- 1265/1275 SPARE LOT
- 1276 3000L DOUBLE FUEL STATION, 1 TANK USED FOR RED DIESEL, THE THER FOR WHITE WITH TWIN PUMPS, G.W.O
- 1277 KUBOTA KX161-2 MINI EXCAVATOR, 4588 HOURS, G.W.O
- 1278 MASSEY FERGUSON 130 TRACTOR, FOR REFURBISHMENT
- 1279 KUBOTA L1500 COMPACT TRACTOR WITH FRONT LOADER, 2WD, 700 HOURS, G.W.O
- 1280 MASSEY FERGUSON 245 DIESEL TRACTOR WITH VARIOUS GRILLS, G.W.O
- 1281 1968 FORD 2000 TRACTOR, REFURBISHED
- 1282 1990 JOHN DEETRE 3650 TRACTOR (H144 XYJ), G.W.O
- 1283 1992 JOHN DEERE 2650 TRACTOR (H995 VRR)
- 1284/1288 SPARE LOT
- 1289 *HONDA 125CC TRIKE, FOR REFURBISHMENT
- 1290 PETROL BUGGY
- 1291 TWO SEATER PETROL GO CART
- 1292 CHILDS PETROL QUAD BIKE
- 1293 CHILDS PETROL QUAD BIKE, G.W.O
- 1294 YAMAHA BREEZE 125 QUAD, SPARES AND REPAIR
- 1295 ARCTIC CAT 700 TWO CYLINDER 686CC DIESEL QUAD BIKE WITH LOMBARDINI ENGINE. AGRICULTURAL REGISTERED (WX61 NYS). 40MPG. NEW BATTERY AND NEW TIMING BELT ONE YEAR AGO. STARTS FIRST TIME HOT OR COLD.
- 1296 SAHARAH 150 OFF ROAD PETROL BUGGY
- 1297 VAUXHALL MOVANO 2015 (HV15 FYN), DOUBLE CAB WITH 7 SEATS, 3.5T ALLOY BODY, 150,000 MILES, 1 COMPANY OWNER, WITH LOGBOOK

AUCTION CATALOGUE

20th April 2024

Auctions starts: 9.30am onwards *= 20% VAT on the Hammer
12.5% Buyer's Premium + VAT on the Hammer

- 1298 CITREON RELAY RECOVERY TRUCK
2016 (HN16 RDU), AMS RECOVERY BODY, 1
OWNER, WITH LOG BOOK, MOT EXPIRES JULY
2024
- 1299 SEAT IBIZA 1.4 2010 REG, 88,000
MILES, MOT
- 1300 MGF ROADSTER (P479 DNP), 39,800
MILES, 12 MONTHS MOT
- 1301 MGF ROADSTER (S218 BPA), 37,000
MILES, 12 MONTHS MOT
- 1302 LAND ROVER 110 COUNTY
COMMERCIAL (YC10 WPV), 12 MONTHS
MOT, 96,500 MILES
- 1303 *2012 TOYOTA HILUX (FE12 HYA),
106,000 MILES, MANUAL, LEATHER,
BLUETOOTH, TOUCH SCREEN, KEY. WAS A
CAT 5 WRITE OFF, PREVIOUS OWNER HAD
REPAIRS DONE AND PUT BACK ON THE ROAD,
MOT EXPIRES DECEMBER 2024, TIMING BELT
DONE AT 100,000 MILES, ALL TERRAIN TYRES,
TOW BALL
- 1304 2004 VAUXHALL VIVARO 1.9 CDTI
LWB 5 SEATER VAN, MOT 25TH JULY 2024,
LOADS OF PAPERWORK, HIGH MILEAGE, HAD
AN ENGINE CHANGE 2 YEARS AGO, STARTS
AND DRIVES WELL
- 1305 REANULT MASTER 2 HORSE BOX,
DIESEL (NU07 OHT) ALEXANDER YORK BODY
3.9 TONNE, UPGRADED FROM 3.5 TONNE,
BLUE, WEAVE GRILLS, 110,000 MILES, TAXED
01/08/24, PASSED MOT 02/01/24, KEPT
UNDERCOVER
- 1306 HONDA PEDAL MOPED, CARB NEEDS
FIXING, G.W.O
- 1307 TRIUMPH SPRINT (R640 FGJ) MOTOR
BIKE, NO LOG BACK, WITH KEY, SPARES AND
REPAIR
- 1308 SINNIS MOTORCYCLE, 125CC, LESS
THAN 600 MILES FROM NEW
- 1309 1997 BETA TECHNO 250CC TRIALS
BIKE, WORKS AS IT SHOULD
- 1310 JM STAR MADNESS SCOOTER (LI58
PVX), WITH V5
- 1311 MINITURE CHOPPER SYTLE SCOOTER
1312/1315 SPARE LOT
- 1316 MTD OPTIMAL G165H RIDE ON
MOWER, NEARLY NEW
- 1317/1319 RIDE ON MOWER
- 1320 EFCO TRACTOR MOWER
- 1321 VILLA STIGA MOWER - WILL START
- 1322 TORO WHEELHORSE RIDE ON
MOWER, G.W.O
- 1323 MTD RIDE ON MOWER, DRIVES
BACKWARDS, NOT FORWARDS
- 1324 JOHN DEERE LT166 RIDE ON MOWER,
W.O
- 1325 JOHN DEERE LTR180 RIDE ON
MOWER, W.O
- 1326 WESTWOOD T1600 GARDEN
TRACTOR, REQUIRES A BATTERY, G.W.O
- 1327 SABRE RIDE ON MOWER, FOR
REFURBISHMENT
- 1328 *BOLANDS RIDE ON MOWER, G.W.O
- 1329 *COUNTAX RIDE ON MOWER, SPARES
AND REPAIRS
- 1330 WHEELHORSE RIDE ON MOWER
- 1331 TRAILER ATTACHMENT FOR RIDE ON
MOWER
- 1332/1338 SPARE LOT
- 1339 X6 IFOR WILLIAMS WHEELS
- 1340 X2 GALVANISED TRAILER MUD
GUARDS
- 1341 X4 TRAILER WHEELS AND TRYES
- 1342 JCB TRENCH BUCKET
- 1343 24" DIGGER BUCKET
- 1344 5FT DIGGER BUCKET
- 1345 X4 TRACTOR TYRES 16.9X30
- 1346 X2 TRACTOR WHEELS, 11.2.0 KAMA
TYRES, G.W.O
- 1347 X2 TRAILER WHEELS, 14.5/80-18,
G.W.O

AUCTION CATALOGUE

20th April 2024

Auctions starts: 9.30am onwards *= 20% VAT on the Hammer
12.5% Buyer's Premium + VAT on the Hammer

1348	X18 ASSORTED COMPACT TRACTOR/UTILITY MOWER WHOLE WHEEL ASSEMBLIES (IN TWO WOODEN CRATES)	1375	*X3 GALVANISED RING FEEDERS
1349	IFOR WILLIAMS BALE ENDS FOR TRAILER	1376	*PEXTON FIELD WATER TANK
1350	QUANTITY OF FORD TRACTOR SPARES	1377	*PEXTON FIELD WATER TANK
1351	QUANTITY OF P.T.O SHAFTS AND GUARDS	1378	*IAE SARACEN CRUSH YOKE UNIT, LITTLE USED
1352	*X4 MEDIUM HYDRAULIC RAMS, G.W.O	1379	*IAE SARACEN CRUSH YOKE UNIT
1353	*X2 SMALL HYDRAULIC RAMS, G.W.O	1380	HARRINGTON SHEEP HANDLER
1354	*X2 FENDT FRONT WHEEL RIMS, G.W.O	1381	X2 NEW ROLLS OF RABBIT/CHICKEN WIRE NETTING
1355	REAR MESH SIDES FOR IFOR WILLIAMS 8FT X 4FT TRAILER, G.W.O	1382	NEW 100M ROLL OF 'HINGE LOCK' STOCK NETTING
1356	TRACTOR SEAT, G.W.O	1383	NEW ROLL OF RABBIT/CHICKEN NETTING
1357	TRAILER TYRES AND RIMS, BKT 10.0/75-15.3M G.W.O	1384	NEW ROLL OF 'HINGE LOCK' DEERE NETTING
1358	X7 TRACTOR FRONT WEIGHTS	1385	ROLL OF ELECTRIC CHICKEN NETTING
1359	X40 BOMFORD 0295901 FLAILS, UNUSED	1386	HUMANE CAGE RABBIT TRAPS
1360	TWO BUNDLES OF CULTIVATOR SHOES	1387	ROLLS OF ELECTRIC RABBIT MESH WITH X3 POSTS
1361	NEW MACHINE/TRACTOR SEAT	1388	CHICKEN CRATE
1362	RANSOME PLOUGH PARTS	1389	*LARGE HORSE CLIPPER
1363	DAVID BROWN PULLEY WITH BELT	1390	*X2 SMALL HORSE CLIPPERS
1364	LARGE METAL RAMP	1391	*X2 SMALL HORSE CLIPPERS
1365	DROPSIDE ALUMINIUM BODY - EX TRANSIT	1392	*ELECTRIC FENCE ENGERGISER
1366	18" AND 24" DIGGER BUCKETS WITH 40MM FIXED PINS READY FOR QUIC HITCH	1393	*ASSORTED HORSE SUNDRIES
1367	GRAPPLE, FITS A 20 TONNE PLUS DIGGER WITH 70MM PINS READY FOR QUICK HITCH	1394	*ASSORTED HORSE SUNDRIES
1368	MINI DIGGER BUCKETS	1395	*NEW MUCK SCRAPERS
1369	20KVA GENERATOR WITH 4 CYLINDER PERKINS DIESEL ENGINE	1396	*NEW MUCK SCRAPERS
1370	SPARE LOT	1397	*NEW DRUM PUMPS
1371	1000L BUNDED FUEL TANK	1398	QTY POULTRY FEEDERS
1372	*X3 GALVANISED RING FEEDERS	1399	QTY POULTRY DRINKERS
1373	*X3 GALVANISED RING FEEDERS	1400	PIG ARK
1374	*X3 GALVANISED RING FEEDERS	1401	PIG ARK
		1402	OMLET EGLUE CHICKEN RUN
		1403	STOCK FECING IN BARBED WIRE
		1404	*FIEM 180 HEN EGG CABINET INCUBATOR, G.W.O
		1405	*X3 PIG WALLOW TANKS, G.W.O
		1406	*X2 BULK PIG FEEDER BINS
		1407	LAMB ADOPTER FRON PANEL
		1408	*X3 CALF MILK FEEDERS
		1409	INCUBATOR HEAT LAMPS

AUCTION CATALOGUE

20th April 2024

Auctions starts: 9.30am onwards *= 20% VAT on the Hammer
12.5% Buyer's Premium + VAT on the Hammer

1410 CHICKEN HUTCH AND RUN
1411 LARGE POULTRY A FRAME RUN - NEW
1412 LARGE POULTRY A FRAME RUN - NEW
1413 GALVANISED STORAGE FEED BIN,
1200 X 900MM
1414 GALVANISED ANIMAL FEED TROUGH,
2.7M (L)
1415 NEW 50M ROLL OF 1.2M (4') HIGH
STOCK FENCING
1416 QUANTITY OF STOCK WIRE ROLLS
1417 SHEEP TURNOVER CRATE
1418 LARGE WATER TROUGH TANK
1419 10M CHICKEN WIRE, NEW
1420/1421 GALVANISED FIELD TROUGH, 6FT
X 18"
1422/1423 GALVANISED FIELD TROUGH, 4FT
X 18"
1424 X2 ROLLS OF MESH STOCK FENCING
1425 GALVANISED WATER TROUGH, NEW
1426 QUANTITY OF STABLE WATER
FEEDERS
1427 QUANTITY OF HORSE SADDLE
HANGERS
1428 ASSORTED HORSE TACK
1429 SET OF DRESSAGE ARENA MARKERS
1430 QUANTITY OF HORSE RUGS
1431 BOX OF ASSORTED HORSE TACK
1432 PONY EXERCISE KART, GOOD
CONDITION
1433 *900L SITE FUEL TANK, FUEL PUMP
NOT WORKING
1434/1436 PALLET OF 8X4 STOCKBOARD
1437 QUANTITY OF ELECTRIC FENCING
1438 NEW SHOP SOILED 10FT WOODEN
FIELD GATE
1439 X2 FIELD GATES
1440 *X2 LARGE GALVANISED WATER
TANKS
1441 *X2 12FT WOODEN GATES
1442 *X2 14FT WOODEN GATES
1443 *X1 16FT WOODEN GATE
1444 *X2 18FT GALVANISED METAL GATES

1445 *X2 15FT GALVANISED METAL GATES
1446 *X3 14FT GALVANISED METAL GATES
1447 *X1 12FT GALVANISED METAL GATE
1448 6FT METAL GATE POST AND GATE
1449 GALVANISED DOUBLE GATE
1450 12FT WOODEN FIELD GATE
1451 11FT WOODEN FIELD GATE
1452 9FT WOODEN FIELD GATE
1453 / 1500 SPARE LOT

Auction 4 - 12:00

**Agricultural antiques, rural and
domestic bygones, and architectural
salvage.**

1501/1504 *BUSH SUPPORT
1505/1510 *FLOWER HEAD
1511/1514 *PLANT OBELISK
1515/1518 *6FT FOLDING LATTICE GARDEN
SPIRE
1519/1520 *2 LEAF FOLDING GARDEN
TRELLIS
1521 COLLECTION OF FARM TOOLS
1522 COLLECTION OF GARDEN TOOLS
1523 SHEPHERDS CROOK
1524 CARPENTERS TOOLS
1525 WILTSHIRE SHEEPS BELL
1526 SHEPHERDS FOLD PITCHING BAR
FROM BERKSHIRE WITH LAMB TAIL DOCKING
IRONS
1527 COLLECTION OF BRASS BELL WEIGHTS
1528 SHEPHERDS TAR POT WITH MARKING
IRONS
1529 1941 MILITARY PICK, 1939 HEAD, AND
1943 BILLHOOK
1530 PAIR OF BRASS HAMES
1531 1939 MILITARY MESS TIN, 1943
SCREWDRIVER AND 1932 MACHETE
1532 X2 BILLHOOKS INC. GILPINS AND
BRADES
1533 SIDE AXE AND MOSS BILL HOOK

AUCTION CATALOGUE

20th April 2024

Auctions starts: 9.30am onwards *= 20% VAT on the Hammer
12.5% Buyer's Premium + VAT on the Hammer

- 1534/1539 SPARE LOT
1540 *KINDLE SPLITTER
1541 *X2 GALCANISED JUGS
1542/1543 *PLANT OBELISK
1544/1545 *OYSTER/OLIVE BUCKET
1546 *55CM HEAVY GAUGE FIREPIT/BBQ
1547 *82CM VAST IRON FIREPIT
1548/1549 *6FT FOLDING LATTICE GARDEN SPIRE
1550 *3 PANEL GUSTAV FOLDING SCREEN
1551/1554 *2 LEAF FOLDING GARDEN TRELIS
1555 *STAINLESS STEEL MILK CHURN
1556 *RED POSTBOX, 270MM (D)
1557 *BLACK POSTBOX, 270MM (D)
1558 *WHITE POSTBOX, 270MM (D)
1559 *9 PIECE KNIFE SET IN BAG
1560 *JOHN DEERE BELL
1561 *TRACTOR BELL
1562 *HORSE BELL
1563 *LANDROVER BELL
1564 *COCKEREL BELL
1565 AN ANTIQUE PITCHFORK
1566 PAIR OF ANTIQUE BRASS COACHING LAMPS
1567 LARGE FRENCH RUSTIC DOUGH BOWL
1568 QUANTITY OF FISHING RODS AND ACCESSORIES
1569 VINTAGE TENNIS RACKETS AND BADMINTON GEAR
1570 X2 WARTIME PROPAGANDA POSTERS
1571/1572 CRATE OF BRASS, COPPER WARES
1573/1574 X2 VINTAGE MILITARY TRUNKS
1575 CRATE OF WOOD PLANES
1576 OLD RECORD BENCH VICE AND OTHERS
1577 X2 ENGLISH DRESSAGE SADDLES ON SADDLE RACKS
1578/1581 SPARE LOT
1582 *TWO WHEELED FLORIST CART
1583 *FOUR WHEELED MARKET CART
1584/1585 SPARE LOT
1586 PAIR OF VINTAGE TERRACOTTA CAMPAGNA GARDEN URNS
1587 PAIR OF LARGE DECORATIVE GARDEN PLANTERS ON PLINTH BASES
1588 PAIR OF OLD STONE PLANTERS
1589 TRIO OF WEATHERED CAST STONE PLANTERS
1590 OLD CAST IRON CORNER HAY FEEDER
1591 VINTAGE REDSHEEN FIRE BRIGADE SIGN
1592 GALVANISED HOPPER WITH BRASS TAP
1593 VINTAGE APPLE SCRATER WITH WOOD HOPPER
1594 PAIR OF LARGE ROUND GARDEN PLANTERS
1595 SINGLE PLANTER
1596 PAIR OF TERRACOTTA AMPHORA
1597 METAL GARDEN SCULPTURE OF A GIRAFFE
1598 A VINTAGE SAILING DINGY - IN EXCELLENT ORDER
1599 *VINTAGE BOAT
1600 *SMALL BOAT
1601 *CARTRIDGE BOX
1602 *ARMILLARY GLOBE
1603 *MOROCCAN LANTERN
1604 *SPOTLIGHT ON TEAK FLOOR STAND
1605 *LANDROVER WEATHERVANE
1606 *COCKEREL WEATHERVANE
1607 *HORSE WEATHERVANE
1608 *TRACTOR WEATHERVANE
1609 *LARGE CAST IRON GARDEN PUMP
1610/1611 *HEAVY TRACTOR STOOL
1612/1613 *TRACTOR SEAT STOOL
1614 *LONG HANDLES BOOTSCRAPER AND BRUSH
1615/1616 *X4 PLANT STAKES
1617 *VICTORIAN HORSE STABLE WINDOW
1618 *GOBLIN BOY
1619 *MR. TOAD
1620 *MR. MOLE

AUCTION CATALOGUE

20th April 2024

Auctions starts: 9.30am onwards *= 20% VAT on the Hammer
12.5% Buyer's Premium + VAT on the Hammer

1621/1633 SPARE LOT	1678 *PAIL WITH WOOD HANDLE
1634 QUANTITY OF YORK STONE PAVING	1679 *X3 LATTICED BOWLS
1635 X3 LARGE OAK BEAMS	1680 *BUCKET WALL PLANTER
1636 VINTAGE MILIATRY WOODEN CRATE, I.E MORGAN	1681 SUNDIAL BASE AND ARMILLARY TOP, 139CM (H)
1637/1639 BIRD BATH	1682 X2 WINGED LION PLANT STANDS, 76CM (H)
1640/1641 ASSORTED PLANTERS	1683 X2 CLASSICAL ROUND PLANTERS, 44CM (H)
1642 VINTAGE DRAPER WORKBENCH WITH VICE	1684 X4 LARGE STADDLE STONES, 44CM (H)
1643/1644 LARGE QUANTITY OF TERRACOTTA POTS	1685 X2 SITTING DOGS, 75CM (H)
1645 X2 VINTAGE WOODEN CRATES	1686 X2 HORSE HEAD FINIALS, 39CM (H)
1646 BOOTTRACK AND SCRAPER	1687 PAIR OF LIONS, 58CM (H)
1647 X2 CAST IRON WEIGHTS	1688 X2 PINEAPPLE GATE PIERS, 50CM (H)
1648 VINTAGE CHIMNEY SWEEP, DRAIN RODS, AND FISHING RODS	1689 X6 SMALL STADDLE STONES, 30CM (H)
1649 ASSORTED SLASHERS	1690 X2 DECORATIVE FLORAL SWAGGED VASES, 56CM (H)
1650 COMPOSITION STONE STATUE OF MOTHER AND BABY	1691 X2 ACANTHUS DESIGN VASES, 63CM (H)
1651 *CAST IRON MR PIG	1692 X2 LEAF DESIGN VASES, 46CM (H)
1652/1653 *SMALL CAST IRON PIG	1693 X3 ALPINE PLANTER TROUGHS, 55CM (L)
1654/1655 *GOLD HORSE HEAD	1694 X3 DECORATIVE CHERUB PLANTERS, 24CM (H)
1656 *CAST IRON COCKEREL	1695 X3 DECORATIVE CHERUB PLANTERS, 24CM (H)
1657/1658 *CAST IRON HORSE HEAD ON BALL	1696 X4 CELTIC HEXAGONAL PLANTERS, 47CM (W)
1659/1660 *HERON	1697/1705 BIRD BATH
1661 *CAST IRON PIG	1706 X4 SQUARE PLINTS, 46CM (H)
1662 *LARGE CAST IRON DEER HEAD	1707 SELECTION OF X3 ASSORTED PLINTHS
1663 *CAST IRON MR RABBIT	1708 SELECTION OF X3 ASSORTED PLINTHS
1664 *CAST IRON MR RATTY	1709 KING AND QUEEN FIGUREINES, 84CM (H)
1665/1666 *ROBIN ON A STICK	1710 X4 PIGS WITH SNOUTS IN THE AIR, 37CM (H)
1667 *SMALL GOTHIC MIRROR	1711/1712 *BUSH SUPPORT
1668 *WIDE ARCHED OUTDOOR MIRROR	1713/1716 *FLOWER HEAD
1669 *TALL ARCHED OUTDOOR MIRROR	1717/1718 *PLANT OBELISK
1670/1671 *RECYCLED TIN MODEL	1719/1720 *6FT FOLDING LATTICE GARDEN SPIRE
1672 *WALL HANGING FISH	
1673 *OLD SMALL KADAI	
1674 *X3 OLD GARDEN PAIS	
1675 *X3 SMALL PLANTERS WITH WOD HANDLES	
1676 *3 ROUND CONNECTED PLANTERS	
1677 *STEEL BRICK MOULD	

AUCTION CATALOGUE

20th April 2024

Auctions starts: 9.30am onwards *= 20% VAT on the Hammer
12.5% Buyer's Premium + VAT on the Hammer

1721/1722 *2 LEAF FOLDING GARDEN TRELLIS	1760 METAL GARDEN ARCH
1723 *X3 OLD BIRD CAGES	1761 ALUMINIUM TUB
1724/1725 *HEAVY GALVANISED PLANTER	1762 VINTAGE GALVANISED ROUND BIN AND LID
1726 *X3 SMALL OVAL PLANTERS	1763 VINTAGE GOODS TROLLEY
1727 *X5 OLD GARDEN PAILS	1764 VINTAGE WAIDE AND SONS NO.4 BUTTER CHURN
1728 *LARGE SKILLET	1765 X7 VINTAGE MAN TRAPS
1729 *LARGE KADAI ON STAND	1766 X3 VINTAGE GARDEN RAKES AN A WEED PULLER
1730/1731 *TALL MILK CHURN	1767 X4 VINTAGE TOOLS AND X2 SHOVELS
1732/1733 *OLD MILK CHURN - S	1768 COLLECTION OF VINTAGE HAND TOOLS INC. A BILL HOOK
1734/1735 *OLD MILK CHURN - M	1769 GARDEN WATER FEATURE
1736/1739 *PAINTED FOLDING CHAIR	1770 SELECTION OF CLAY POTS
1740 *HALF ROUND HANDI	1771 X4 ORNAMENTAL POTS
1741 X2 RUSTIC LARGE HARES, 68CM (H)	1772 SELECTION OF ORNAMENTAL POTS
1742/1743 X3 ASSORTED BUDDHAS	1773 X2 BELFAST SINKS
1744 X2 WROUGHT IRON DECORATIVE PLANT STANDS, 85CM (H) X 88CM (W)	1774 ASSORTED PLANT POTS
1745 X2 3 TIER WROUGHT IRON PLANT STANDS, 83CM (H) X 77CM (W)	1775 ASSORTED SHOE REPAIR IRONS
1746 X2 WROUGHT IRON BARROW STYLE PLANT STANDS, 78CM (H) X 37CM (W)	1776 *ROUND WATER POT
1747 WROUGHT IRON ROSE ARCH, 245CM (H) X 130CM (W)	1777/1778 *X3 MILK BUCKETS
1748 X4 FAUX STONE VASES IN WHITE, 30CM (H)	1779 *SMALL OLD BUCKET
1749 FAUX STONE VASE, COLUMN, AND ANGEL	1780,1781 *SMALL HANGING POT
1750 RECONSTITUTED STONE MONKEY TOTEM, 94CM (H)	1782 *CHARCOAL COOKING STOVE
1751 RIVETED GALVANISED TANK, 1.6 X 90 X 90	1783 *IRON SKILLET
1752 RIVETED GALVANISED TANK, 90 X 30 X 30	1784/1785 *GALVANISED OVAL PLANTER - L
1753 ANTIQUE 3/4 OAK BARREL, 70 DIA	1786 *GUINNESS SIGN
1754 GARDEN TABLE AND TWO CHAIRS	1787 *TOTTENHAM HOTSPUR SIGN
1755 FORDSON MAJOR TOOLBOX	1788 *LIVERPOOL FOOTBALL PLAQUE
1756 POSTBOX, 30" X 12"	1789 *SOUTHAMPTON PLACK
1757 GARDEN SEAT	1790 *X6 CAST IRON SALAD SIGNS
1758 VINTAGE COMPRESSOR PUMP, WORKING ORDER	1791 *X6 CAST IRON VEGETABLE SIGNS
1759 COLLECTION OF VINTAGE ITEMS INC. WATERING CAN, TIN BATH ETC	1792 *X10 PAINTED HERB SIGNS
	1793/1795 *X6 VEGETABLE SIGNS
	1795 *NO TRESSPASSING SIGN
	1796 *SOLIHULL LANDROVER SIGN
	1797 *LISTER SIGN
	1798 *CAST IRON MASSEY FERGUSON SIGN
	1799 *JOHN DEERE SIGN
	1800 *FORD COUNTY TRACTOR SIGN

AUCTION CATALOGUE

20th April 2024

Auctions starts: 9.30am onwards *= 20% VAT on the Hammer
12.5% Buyer's Premium + VAT on the Hammer

1801	X2 OLD GALVANISED WHEEL BARROWS, FOR PLANTERS	1834	OUTDOOR TABLE AND CHAIRS
1802	X2 OLD MANGLES	1835/1837	COBBLERS LAST
1803	BLACKSMITHS LONG LEG VICE	1838	X2 VINTAGE BIKES, RESTORATION PROJECTS
1804	OLD WATERPUMP	1839	SMALL FIRESTOVE
1805	SELECTION OF GARDEN POTS	1840	SET OF TWO FIRE DOGS
1806	CAST IRON MANGLE	1841	X8 DECORATIVE WALL PLATES WITH WIRE WALL HANGERS ATTACHED, DICK TWINNEY 'THE MAGNIFICENT SHIRE' SERIES, X4 DECORATIVE WALL PLATES WITH WIRE WALL HANGERS ATTACHED, WEDGEWOOD 'THE FARM YEAR' SERIES, X4 DECORATIVE WALL PLATES WITH WIRE WALL HANGERS ATTACHED, WEDGEWOOD 'THE FOUR SEASONS' SERIES
1807	X2 CAST IRON TABLES	1842	6FT X 2FT IRON GARDEN GATE
1808	CHINESE DRINKS CABINET	1843	CAST IRON FIRE PLACE, GOOD CONDITION
1809	BOX OF VICTORIAN KITCHENALIA	1844	VICTORIAN WROUGHT IRON COT, IDEAL PLANTER
1810	CHIMNEY POTS AND A BUTLER SINK	1845	ROCKET STOVE, USED ONCE
1811	GALVANISED WATER TANK WITH BRASS TAP	1846	CAST IRON FIRE GRATE AND DOGS, 3FT X 1.6FT
1812	WOODEN GARDEN CHAIR	1847	CAST IRON FIRE BASKET AN BACK
1813	X5 VINTAGE WOODEN BOXES WITH LIDS	1848	HARLEY DAVIDSON CERTAMIC MONEYBAG, NEW
1814	PLANT HOLDERS, 2 STONE POTS	1849	MODEL STEAM ENGINE, IN BOX
1815	A SMALL WOODEN WHEEL BARROW	1850	PINE FARMHOUSE DRESSER, PAINTED WHITE, 200CM (H) X 120CM (W) X 45CM (D)
1816	X3 METAL PLANT SUPPORTS	1851	PINE WALL CORNER UNIT
1817	LARGE WICKER HAMPER	1852	X2 PINE FARMHOUSE BARSTOOLS
1818	*CHURN BUCKET	1853	STATUE OF A LADY
1819	*X2 MILK CHURNS	1854	STATUE OF A SEATED GIRL
1820	GARDEN GATES	1855	PAIR OF URNS ON PLINTHS
1821	STATIONARY LISTER ENGINE, WITH MANUAL (IN OFFICE)	1856	WROUGHT IRON BRACKET
1822	CAST IRON PUNCH AND JUDY DOOR STOP	1857	ASSORTED TERRACOTTA PLANT POTS
1823	CAST IRON SAUSAGE DOG BOOT SCRAPER	1858	VINTAGE STEP LADDER
1824	STONE GARDEN BENCH	1859	TERRACOTTA URN WITH HANDLES
1825	STONE BIRD TABLE	1860	DEMIJOHN CARBOY BOTTLE
1826	STONE MEMORIAL FLOWER HOLDER	1861	X2 TERRACOTTA STRAWBERRY PLANTERS
1827	STONE WATER PUMP AND 1/2 BARREL	1862	BIRD BATH
1828/1829	PATIO TABLE AND FOUR CHAIRS		
1830	X2 GARDEN CHAIRS AND A COFFEE TABLE		
1831	GARDEN CHAIR AND A DECK CHAIR		
1832	GARDE ASSORTMENT, WATERING CANS, POTTING TABLE AND TOOLS		
1833	X2 6FT GATES, ONE GREY AND ONE BROWN		

AUCTION CATALOGUE

20th April 2024

Auctions starts: 9.30am onwards *= 20% VAT on the Hammer
12.5% Buyer's Premium + VAT on the Hammer

1863 ROUNDED PLANTER PLINTH
1864 GALVANISED WATERING CAN AND ANOTHER
1865 X3 ASSORTED CHIMNEY POTS
1866 ASSORTED PLANTERS
1867 X4 WALL PLAQUES
1868 WROUGHT IRON OBELISK
1869 ROUND WROUGHT IRON GARDEN TABLE WITH WOODEN TABLE TOP
1870 DECORATIVE WROUGHT IRON PLANT SCULPTURE
1871 WROUGHT IRON PLANT STAND
1872 GARDEN TABLE AND 6 CHAIRS
1873/1874 GARDEN BENCH WITH CAST IRON BENCH ENDS
1875 JOB LOT OF DECORATIVE FLOWERPOTS
1876 BAMFORD NO.2C RAPID GRINDING MILL WITH PULLEY BELT
1877/1878 VINTAGE EQUESTRIAN FEED BIN
1879 GLASS FRONTED OLD PINE CUPBOARD
1880 VINTAGE LADIES BIKE
1881 PICNIC TABLE, METAL AND COMPOSITE
1882 HORSE DRAWN CULTIVATOR
1883 HORSE DRAWN PLOUGH
1884 VINTAGE BATH
1885 X2 GALVANISED FEED BINS
1886 OLD RIVETED METAL WATER TROUGH
1887 OLD IRON FIELD GATE
1888 X2 ALUMNIUM CHURNS
1889 STEEL CHURN
1890 OLD BRASS POTS WITH STEEL HANDLES
1891/1893 SPARE LOT
1894 STEWART TURNER STATIONARY ENGINE
1895 BLUE WHEELED TROLLEY, FOR A STATIONARY ENGINE
1896 X2 BELFAST SINKS
1897 LOG BURNER
1898 CAST IRON FIRE ORNATE FIRE BACK

1899 STREET LANTURN (ELECTRIC)
1900 IRONCRETE GARDEN ROLLER
1901 QUANTITY OF HALF ROUND WALL BASKETS
1902 / 2000 SPARE LOT

Auction 5 - Will start no later than 14:00

Workshop equipment and garden machinery.

2001 TIMBER WORKBENCH WITH TWO VICES
2002 SCHEPPACH MITRE SAW FOLDING BENCH, G.W.O
2003 RECORD 84 (QUICK RELEASE) VICE
2004 WELDMATE 140 WELDER
2005 SWITZER ENCLOSED PARTS WASHER, G.W.O
2006 HYDROTHERM VAPIR BLAST CABINET, G.W.O
2007 PLANER THICKNESSER
2008 QTY HYRDAULIC HOSE
2009 RYOBI BANDSAW
2010 CIRCULAR SAW BENCH
2011 BANDSAW
2012 *SIP WELDER, G.W.O
2013 WORKMATE VICE
2014 BOX OF AIR TOOLS
2015 TYRE CHANGING MACHINE
2016 ELECTRIC TABLE SAW, G.W.O
2017 PETROL ENGINE MOBILE POWERWASHER. G.W.O
2018 RECORD POWER SAW DUST EXTRACTOR, WORKING
2019 SMALL BAND SAW
2020 240V PILLAR DRILL
2021 WOODEN BENCH AND VICE
2022 FLY PRESS
2023 QUANTITY OF NUTS AND BOLTS
2024 QUANTITY OF TAP AND DIE SETS

AUCTION CATALOGUE

20th April 2024

Auctions starts: 9.30am onwards *= 20% VAT on the Hammer
12.5% Buyer's Premium + VAT on the Hammer

- | | | | |
|-----------|---|------|---|
| 2025 | 2FT (SMALL) PLATE ROLLER, G.W.O | 2067 | MOUNTFIELD 18" MOWER, FOR REFURBISHMENT |
| 2026 | SHOT BLASTING UNIT, G.W.O | 2068 | MOUNTFIELD 21" MOWER, FOR REFURBISHMENT |
| 2027 | SPALDINGS 1PH METAL BANDSAW | 2069 | GV750 LEAF VACUUM WITH LEAF SHREDDER, G.W.O |
| 2028 | WICKSTEEL 3PH POWER HACKSAW | 2070 | HOWARD BANTAM ROTAVATOR |
| 2029 | ELAND MIG WELDER, G.W.O | 2071 | MOUNTFIELD MOWER, WILL START |
| 2030 | MIGMATE MIG WELDER, WITH FULL GAS BOTTLES AND WIRE, FULL WORKING ORDER | 2072 | MOUNTFIELD RM55 OHV 160CC MOWER |
| 2031/2041 | SPARE LOT | 2073 | REFDOX QUANTUM LXS 60 MOWER |
| 2042 | MANUAL TYRE CHANGING STAND | 2074 | HAYTER 41 MOWER, G.W.O |
| 2043 | MANHOLE AUGER, G.W.O | 2075 | HAYTER 41 REAR ROLLER MOWER, G.W.O |
| 2044 | ELECTRIC GARDEN SHREDDER, G.W.O | 2076 | HAYTER 4 WHEEL MOWER, W.G.O |
| 2045 | ELECTRIC GARDEN SHREDDER, G.W.O | 2077 | HAYTER 48 MOWER, G.W.O |
| 2046 | 2000W ELECTRIC GARDEN SHREDDER, G.W.O | 2078 | MOUNTFIELD ST535 MOWER, G.W.O |
| 2047 | 1600W ELECTRIC GARDEN SHREDDER, G.W.O | 2079 | MOUNTFIELD RV40 MOWER, G.W.O |
| 2048 | SOVEREIGN PETROL MOWER G.W.O | 2080 | ATCO CYLINDER MOWER, W.O |
| 2049 | HAYTER SPIRIT PETROL MOWER, G.W.O | 2081 | KAZ 4 STROKE MOWER |
| 2050 | SOVEREIGN SELF PROPELLED PETROL MOWER, G.W.O | 2082 | EINHELL ROTAVATOR, G.W.O |
| 2051 | MITOX SELF PROPELLED MOWER, G.W.O | 2083 | HONDA MOWER |
| 2052 | HONDA HR21 CYLINDER MOWER, G.W.O | 2084 | MOUNTFIELD MOWER, WILL START |
| 2053 | PARTNER 18" HAND PROPELLED MOWER, G.W.O | 2085 | FLYMO HOVER MOWER |
| 2054 | QUALCAST ELECTRIC MOWER, G.W.O | 2086 | BOLENS ROTAVATOR |
| 2055 | ALKO COMFORT SELF PROPELLED MOWER, G.W.O | 2087 | HAYTER MOWER, G.W.O |
| 2056 | BOSCH MOWER | 2088 | X2 HAYTER LAWN MOWERS, FOR REFURBISHMENT |
| 2057/2061 | PETROL MOWER | 2089 | PETROL ROTAVATOR, G.W.O |
| 2062 | MCCULLOCH CHAINSAW AND LAWN MOWER | 2090 | HONDA HR 2160 LAWN MOWER WITH BAG |
| 2063 | HAYTER HARRIER 56 MOWER (NO GRASS BOX) | 2091 | SISIS AUTOROTA RAKE, MKIV SCARIFIER, RUNS |
| 2064 | HAYTER HARRIER 56 LAWN MOWER | 2092 | CAMON ROTAVATOR, RUNS |
| 2065 | WHEELED ROUGH GRASS CUTTER | 2093 | FLYMO L38 PETROL HOVER MOWER |
| 2066 | BULLY GOAT LEAF COLLECTOR, MTD202 BRIGGS AND STRATTON, 800 SERIES 205CC ENGINE, G.W.O | 2094 | EARTHWAY EV-N-SPREAD FERTILISER SPREADER |
| | | 2095 | WHITE LINE MARKING MACHINER |
| | | 2096 | WEBB MOWER WITH ROBIN EY20 ENGINE |

AUCTION CATALOGUE

20th April 2024

Auctions starts: 9.30am onwards *= 20% VAT on the Hammer
12.5% Buyer's Premium + VAT on the Hammer

- | | | | |
|-----------|---|-----------|--|
| 2097 | LAWNKING TURBO 50 MOWER WITH BRIGGS AND STRATTON QUANTUM XL550 ENGINE | 2132 | PETROL STRIMMER |
| 2098 | WOLSLEY MERRY TILLER "MAJOR" COME WITH ACCESSORIES AND ATTACHMENTS | 2133 | MANTIS TILLER |
| 2099 | HONDA HRD535 21" ROTARY MOWER, G.W.O | 2134 | STIHL SH56 LEAF BLOWER |
| 2100 | QUALCAST 17" CYLINDER MOWER, G.W.O | 2135/2137 | HEDGE CUTTER |
| 2101 | HONDA GX160 5.5HP ENGINE, G.W.O | 2138 | BLOWER |
| 2102 | SMALL GARDEN ROTAVATOR | 2139 | BLACK AND DECKER HEDGE TRIMMER, G.W.O |
| 2103 | PETROL CYLINDER MOWER | 2140 | LAWNFLITE HEDGE TRIMMER |
| 2104 | *LAWN AERATOR | 2141 | DRAPER PETROL MULTI-TOOL |
| 2105 | *4 WHEELED ROTARY MOWER, SPARES AND REPAIRS | 2142 | PARKER STRIMMER |
| 2106 | *4 WHEELED ROTARY MOWER, SPARES AND REPAIRS | 2143 | X3 HEDGE CUTTERS INC. X2 TANAKA AND X1 JOHANSPEED |
| 2107 | *4 WHEELED ROTARY MOWER, SPARES AND REPAIRS | 2144 | STIHL FS81 BRUSHCUTTER, SPARES AND REPAIRS |
| 2108 | *HONDA MOWER, SPARES AND REPAIRS | 2145 | CASTOR POWER 22 PETROL TRIMMER, SPARES AND REPAIRS |
| 2109 | *HAYTER HARRIER 48 MOWER, WILL START | 2146 | MITOX PETROL STRIMMER, SPARES AND REPAIRS |
| 2110/2113 | * EGO 21" BATTERY MOWER, G.W.O | 2147 | / 2200 SPARE LOT |
| 2114 | *TORO 21" MOWER, SPARES AND REPAIRS | | |
| 2115/2120 | *SPARE LOT | | |
| 2121/2122 | *STIHL FS450 STRIMMER, WILL START | | |
| 2123 | *STIHL BR600 BLOWER, SPARES AND REPAIRS | | |
| 2124 | *METAL GUILLOTINE, G.W.O | | |
| 2125 | *STIHL HEDGE TRIMMER, G.W.O | | |
| 2126 | *BACKPACK BLOWER, WILL START | | |
| 2127 | *MITOX STRIMMER, SPARES AND REPAIRS | | |
| 2128 | QUANTITY OF PETROL GARDEN TOOLS | | |
| 2129 | ECHO BACKPACK LEAF BLOWER | | |
| 2130 | STIHL S25 STRIMMER, W.O | | |
| 2131 | STIHL STRIMMER, G.W.O | | |

CONSIGN TO AUCTION

We are currently accepting entries to our next West Meon collective auctions taking place in July and September 2024.

The auction will once again take place at the popular site at the West Meon Crossroads Sale ground in Hampshire, and if you have any items you would like to move onto a new home then we would love to hear from you! You can get in touch with us at any time using the contact details below, or you can consign using the QR code on the next page.

Rob Snelgar



Director

-
-  +44 07966 437 095
 -  ROB@WELLERSACTIONS.COM
 -  WWW.WELLERSACTIONS.COM
 -  BEDFORD ROAD, GUILDFORD, GU14SJ

Contact Me Today!

Tom Lofts



Director

-
-  +44 07771 556 000
 -  N/A
 -  WWW.WELLERSACTIONS.COM
 -  BEDFORD ROAD, GUILDFORD, GU14SJ

Contact Me Today!

SCAN TO CONSIGN

